



XPC-2POST Rack Solution

For use with XPC Rack Models of UPS or Battery Packs

User & Installation Manual

Table of Contents

Description.....3

Kit Contents.....4

Installation Instructions.....4

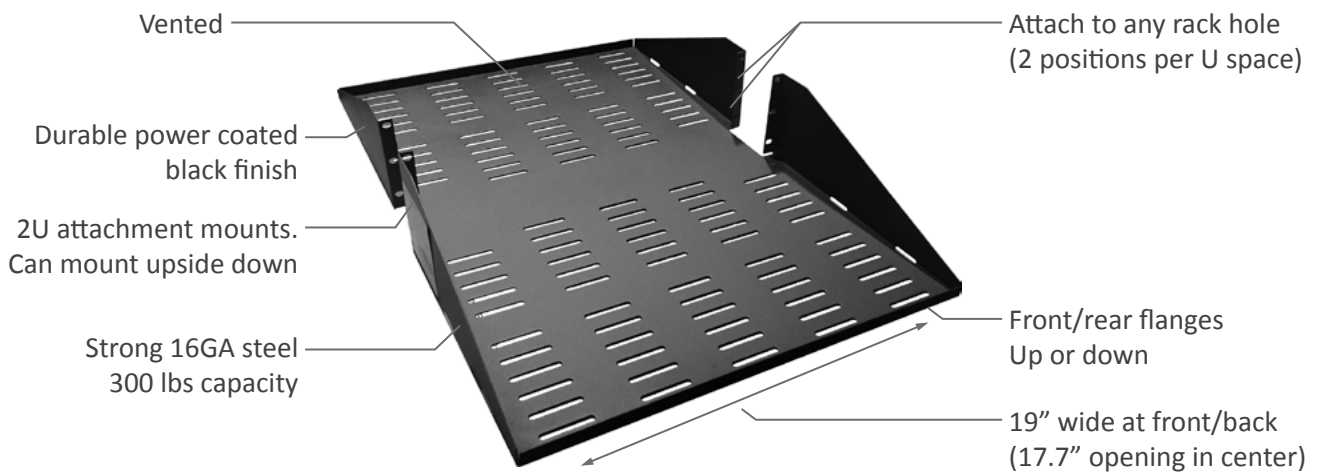
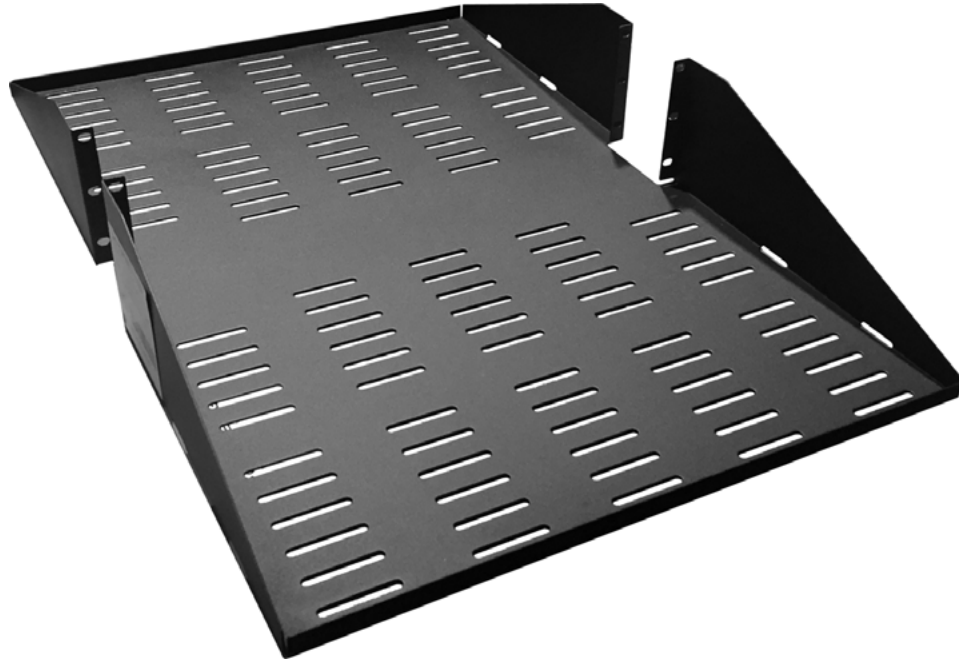
 Attach Shelf to Rack.....4

Technical Specifications.....5

XPC-2POST Rack Shelf Diagram.....6

Description

The XPC 2 Post Rack Solution is compatible with most 19" EIA standard 2 Post racks. The 2 post rack shelf has a 300 lbs equipment capacity and will support a wide variety of electronic equipment. Devices up to 29" in depth can be supported on this 2 post rack shelf.



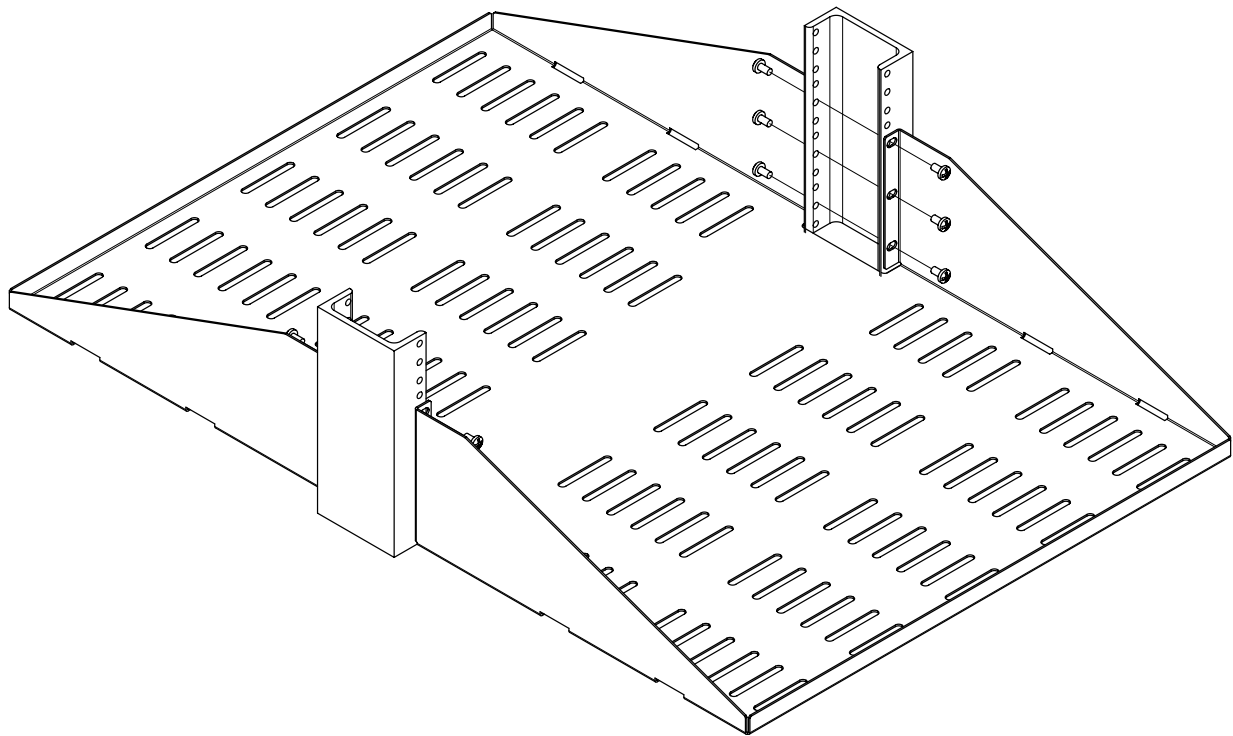
Kit Contents

- (1) Shelf
- (12) 12-24 Pan Head Screws
- (12) 10-32 Pan Head Screws

Installation Instructions

Attach Shelf to Rack

Line up 3 holds in each attachment flange and bolt to rack in desired position using the 10-32 Pan Head Screws.



Attach Shelf to Rack

Make sure that your rack is securely attached and anchored to the floor.

Once the shelf is securely attached to the rack, carefully place the UPS into the shelf. The weight of the UPS might require two people to perform this function. Make sure that the UPS is centered on the shelf, both side-to-side and front-to-back.

It is always advisable to install the UPS in the lower portion of the rack to assure stability.

Please follow all installation instructions in the manufacturer's equipment manual for the equipment to be installed on the shelf.

Technical Specifications

Rack Type	EIA 19" standard 2Post racks
Rack Type	2Post
Rack Units	3U
Weight Capacity	300 lbs (136 kgs)
Equipment Depth	Supports equipment up to 29" (736 mm). The equipment can be deeper than the rack mount shelf as long as the equipment is installed on the opposite side of the flanges. The flanges increase load capacity and prevent equipment movement.
Mounting Depth Range	Compatible with 2Post racks with 3" (76.2 mm) side posts
Overall Installation Depth	29" (736.6 mm)
Shelf Surface Area	17.7" x 29" (450 mm x 736.6 mm)
Shelf Type	Vented
Finish	Black textured powder coat
Included Hardware	10-32 & 12-24 pan head screws
Hole Type	10-32 or 12-24 threaded holes Square hole relay racks will require cage nuts
Assembly Notes	Phillips head screwdriver required
Tech Notes	Shelf depth is measured from front to rear including flanges

XPC-2POST Rack Shelf Diagram

