

UPS ULTRA HIGH RATE

XP12-740FR (12V, 740.0WPC, 215.2AH)



Specification

Nominal Voltage	12V
Nominal Capacity(8 HR)	215.2 Ah at 1.75V/cell @ 25°C/77°F
Watts(15 min rate)	740.0 Watts/cell at 1.67V/cell @ 25°C/77°F
Dimensions	Length 522mm(20.55inches)
	Width 240mm(9.45inches)
	Container Height 218mm(8.58inches)
	Total Height (with Terminal) 224mm(8.82inches)
Approx Weight	Approx 63.5 kg (140.0 lbs)
Terminal	T11 with copper alloy insert for a M8 bolt
Container Material	Flame Retardant ABS to UL94-V0
Rated Capacity	234.0 AH/11.7A (20hr, 1.80V/cell, 25°C/77°F)
	215.2 AH/26.9A (8hr, 1.75V/cell, 25°C/77°F)
	196.0 AH/39.2A (5hr, 1.75V/cell, 25°C/77°F)
	170.4 AH/56.8A (3hr, 1.75V/cell, 25°C/77°F)
	145.2 AH/145.2A (1hr, 1.60V/cell, 25°C/77°F)
Max. Discharge Current	2200A (5s)
Internal Resistance	Approx 2.6mΩ
Operating Temp.Range	Discharge : -20~55°C (-4~131°F)
	Charge : 0~50°C (32~122°F)
	Storage : -20~55°C (-4~131°F)
Nominal Operating Temperature	20 to 25°C (68 to 77°F)
Standby Use (Float Voltage)	No limit on Initial Charging Current. 13.5V~13.8V at 25°C (77°F) Temp. Coefficient -20mV/°C
Cycle Use	Initial Charging Current less than 66.0A. 14.4V~15.0V at 25°C (77°F) Temp. Coefficient -30mV/°C
Capacity affected by Temperature	40°C (104°F) 103%
	25°C (77°F) 100%
	0°C (32°F) 86%
Self Discharge	≤3% of capacity declined per month at 25°C

Application

- ◆ Critical UPS (High rate) applications
- ◆ High power backup supply
- ◆ Emergency power supply
- ◆ Emergency lighting
- ◆ Electric starting

Compliant Standards

- Eurobat Classification:*
- ◆ High Performance (10~12 years design life)
 - ◆ IEC60896-21/22:2004
 - ◆ BS 6290 Part 4

Constant Current Discharge (Amperes) at 25 °C (77°F)

F.V/Time	5min	10min	15min	20min	30min	45min	1h	2h	3h	4h	5h	6h	8h	10h	20h
1.85V/cell	382.8	322.1	297.4	268.0	198.4	144.9	116.2	69.3	52.3	42.9	36.5	31.9	25.8	21.5	11.6
1.80V/cell	454.1	363.1	323.8	287.8	211.6	153.1	122.9	73.0	54.6	44.7	37.9	32.9	26.4	22.0	11.7
1.75V/cell	535.9	409.3	353.8	309.5	226.2	162.8	130.5	76.3	56.8	46.3	39.2	33.8	26.9	22.2	11.9
1.70V/cell	596.6	442.2	379.3	326.0	239.8	171.9	135.7	79.1	58.4	47.5	39.9	34.4	27.3	22.4	12.0
1.67V/cell	650.0	476.5	402.2	342.5	250.4	178.1	140.8	81.5	60.1	48.5	40.6	35.0	27.6	22.6	12.1
1.60V/cell	715.4	512.2	423.3	357.1	260.0	183.9	145.2	83.7	61.1	49.2	41.3	35.6	27.9	23.0	12.3

Constant Power Discharge (Watts/Cell) at 25 °C (77°F)

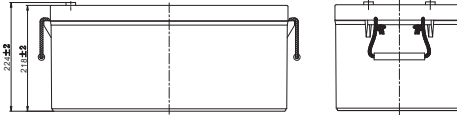
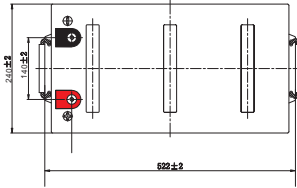
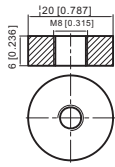
F.V/Time	5min	10min	15min	20min	30min	45min	1h	2h	3h	4h	5h	6h	8h	10h	20h
1.85V/cell	717.8	613.5	574.0	522.2	390.6	287.9	232.3	139.3	105.5	87.0	74.2	65.0	52.7	44.0	23.8
1.80V/cell	840.0	683.5	618.6	555.7	414.4	302.7	244.8	146.3	109.8	90.3	76.8	66.9	53.8	45.0	24.1
1.75V/cell	976.3	759.5	668.3	591.7	439.5	320.2	258.8	152.4	113.9	93.3	79.1	68.4	54.7	45.4	24.3
1.70V/cell	1068.8	809.4	707.6	616.7	462.2	336.1	267.7	157.3	116.8	95.4	80.5	69.6	55.3	45.7	24.6
1.67V/cell	1140.3	857.7	740.0	640.5	478.5	345.6	275.8	161.4	119.8	97.1	81.5	70.5	55.8	46.1	24.9
1.60V/cell	1223.4	903.3	764.8	657.9	490.9	353.1	282.1	164.4	120.9	98.0	82.7	71.5	56.4	46.7	25.0



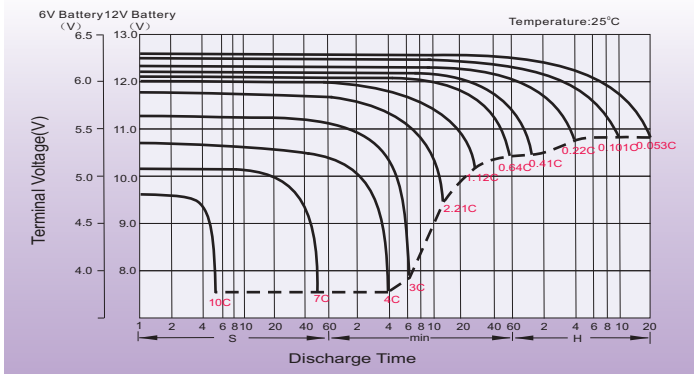
Dimensions

T11 Terminal

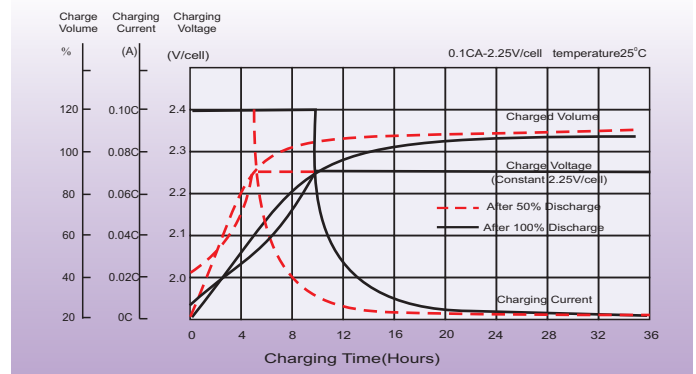
Unit: mm [inches]



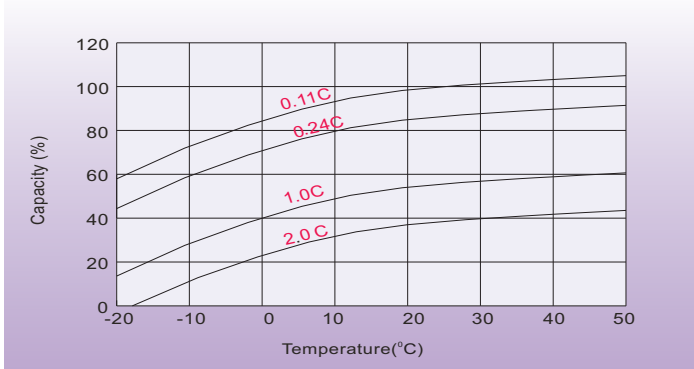
Discharge Characteristics



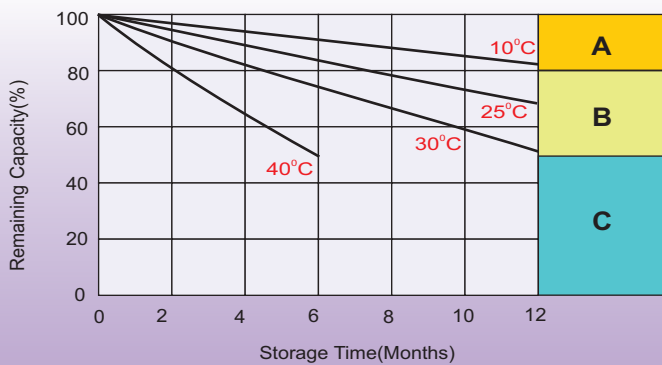
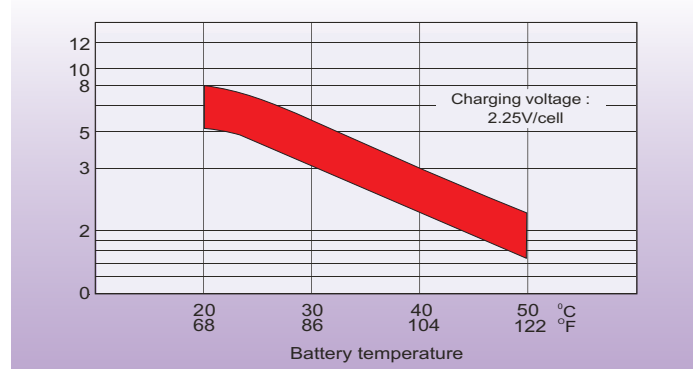
Float Charging Characteristics



Temperature Effects in Relation to Battery Capacity



Effect of Temperature on Long Term Float Life



Self Discharge Characteristics

- A** No supplementary charge required
(Carry out supplementary charge before use if 100% capacity is required.)
- B** Supplementary charge required before use. Optional charging way as below:
 1. Charged for above 3 days at limited current 0.25CA and constant volatge 2.25V/cell.
 2. Charged for above 20hours at limited current 0.25CA and constant volatge 2.45V/cell.
 3. Charged for 8-10hours at limited current 0.05CA .
- C** Supplementary charge may often fail to recover the capacity.
The battery should never be left standing till this is reached.

Sales Office

North America sales office:
19751 Descartes, Unit A ,
Foothill Ranch, CA 92610, USA
Tel: 949-588-5853
Fax: 949-588-5966
E-mail: sales@leoch.us
Http://www.leoch.us

Atlanta Office:
1395 S. arietta Parkway Building 400
Suite 108 arietta, GA 30067
Tel: 678-403-1083
E-mail: sales@leoch.us

China sales office:
5th Floor, Xinbaohui Bldg.,Nanhai Blvd.,
Nanshan,Shenzhen, China. 518052
Tel: +86-755-86036060 (100 lines)
Fax: +86-755-26067269
E-mail: export@leoch.com

Europe sales office:
9 B Wheatstone Court. Waterwells
usineBs Park, Gloucester, GL2-2AQ,
K United Kingdom
Tel: +44(0) 1452 729428 / 1452 729696
Fax: +44 (0)1452-690125
E-mail: Sales.Europe@leoch.com