

XTREME POWER CONVERSION Web/SNMP Cards

UPS Management



Provide real-time monitoring, management, and control of remotely connected UPS from a web browser

Xtreme Power UPS capabilities can be enhanced with the addition of an optional Web/SNMP card.

The included software allows you to conveniently manage, maintain, and monitor your UPS, while enabling graceful shutdowns and monitoring environmental conditions.

PRODUCT SNAPSHOT

- › Real-time UPS monitoring
- › Centralized authentication by Radius
- › Support UPS MIB, RFC1628, PPC MIB
- › Standard three year limited factory warranty

FEATURES

UPS management and real-time monitoring—develop a comprehensive power management and monitoring plan with flexible configuration via Web Browser, NMS, Telnet, or SNMP

Advanced Encryption—use https, SSL, SSH, and SNMPv3 protocols

Event notification—receive notifications via email, SMS, or Traps







Detailed log listing—through event, data, and battery test logs

Multiple language support—set a customizable user interface to meet site specific needs

UPS control—schedule UPS self tests, examine event/data logs, perform multi server shutdown, examine battery performance, reboot UPS and load equipment, and more

Environmental monitoring—optional SNMP-EMD monitors temperature, humidity, and water level and sends Trap and email notifications when events occur

MODEL SELECTION GUIDE

MODEL NUMBER	SNMP-1PMINI	SNMP-1PIN	SNMP-R90	SNMP-USB	SNMP-2PMINI	SNMP-3PEX
CPU	ARM9 180MHz 32Bit					
Port	1 port			2 ports		3 ports
Flash memory	8MB					
Web multi-language	Yes					
Power source	Internal		External*		Internal	External*
Watch Dog	Yes					
LAN interface	10M/100M UTP					
LAN protocol	TCP/IP, HTTP, HTTPS, SSL, SSH, SMTP, SNMP, DHCP, Telnet, BOOTP, DNS, DDNS, PPPoE, RADIUS, IPv4, IPv6					
MIB	PPC MIB, RFC1628, SNMPv1, SNMPv2, SNMPv3					
Real time clock (RTC)	Yes					
Warranty	3 years (USA and Canada)					
UPS power cycle	✓	✓	✓	✓	✓	✓
External box			✓	✓		✓
Internal card/module	✓	✓			✓	
SNMP-EMD compatible					✓	
LCD display				✓		✓
Dimensions (W x D x H)	2.0 x 3.1 x 0.9 in	2.7 x 4.9 x 1.1 in	1.9 x 2.5 x .75 in	1.7 x 2.2 x .75 in	2.0 x 3.1 x 0.9 in	3.1 x 6.1 x 1.3 in
Product image						

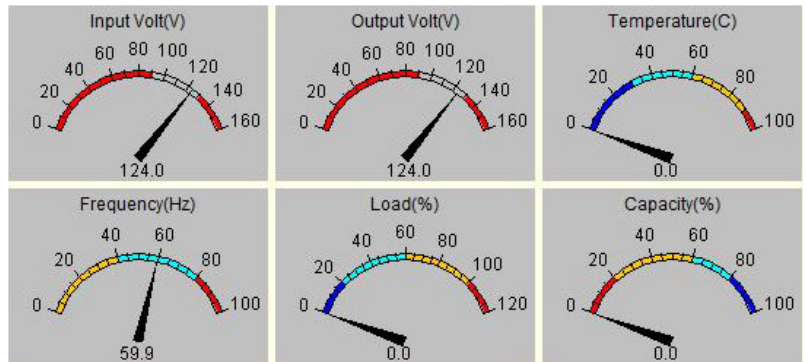
*External 120V power adapter included

WEB/SNMP CARD COMPATIBILITY GUIDE

Model Number	Part Number	Xtreme Power UPS
SNMP-1PMINI	90000260	P80(g), P90(g), P90L 1250VA-3000VA, P90L 6kVA & 10kVA, NXRT, TX90 1000VA-5000VA
SNMP-1PIN	90000261	T90 700VA-3000VA, T90 6kVA & 10kVA, TX90 6kVA & 10kVA
SNMP-R90	90000266	R90
SNMP-USB	90000281	XST, S70
SNMP-2PMINI	90000399	P80(g), P90(g), P90L 1250VA-3000VA, P90L 6kVA & 10kVA,
SNMP-3PEX	90000263	P80(g), P90(g), P90L 1250VA-3000VA, P90L 6kVA & 10kVA, NXRT



Optional SNMP-EMD environmental monitoring device



SNMP Web management interface meter/chart



Protect your business.

XPC USA / Denver, CO / sales@xpcc.com

XPC EMEA / Rotterdam, NL / emea@xpcc.com

www.xpcc.com

©2016 Xtreme Power Conversion Corporation. All Rights Reserved. SNMP.01U (Rev 8/12/16)