

Long Duration Telecom

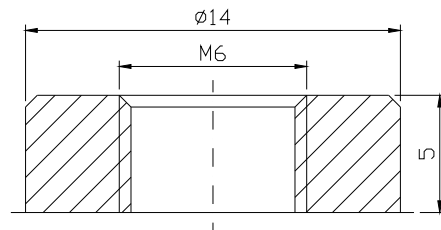
RPS Long Duration Telecom (LDT) batteries have been engineered specifically for telecommunication applications requiring reliable performance during long discharges. Flush-mount terminals on smaller batteries and front access terminals on the larger batteries provide the highest power density in size for their class and save time and money for ease of installation.

Applications

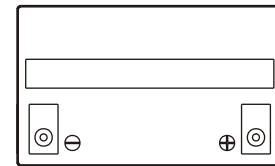
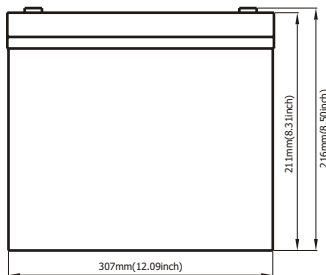
- Wireless
- Customer Premise
- Broadband
- Microwave
- Outside Plant
- FTTP/DLC

General Features

- Front Terminal Design
- AGM Sealed Maintenance Free
- Non-Spillable Construction
- Patented O-Ring and Epoxy Resin Post Seal
- UL 1778, 1989, 924 and DOT CFR 171-189 Approved
- UL94V-0 ABS Flame Retardant Case
- Thermally Welded Case to Cover Bond
- Exceptional Deep Discharge and Fast Recovery Capability
- Low Pressure One-Way Safety Release Valve with Flame Arrestors
- Exceptional Cycle Life Capacity



Terminal 6 mm Torque 6 NM / 53in/lbs



Battery Model		LDT12-80			
Designed Floating Life	12 Years				
Capacity(25°C)	20HR(4.6A,1.75V)	10HR(9A,1.75V)	8HR(10.8A,1.75V)	1HR(63A,1.75V)	
	92AH	90AH	86AH	63AH	
Dimensions	Length	Width	Height	Total Height	
	307mm(12.09inch)	169mm(6.65inch)	211mm(8.31inch)	216mm(8.5inch)	
Approx. Weight	28.7Kg (63.29 lbs)				
Internal Resistance	Full charged at 25°C: 0.0055 Ohm				
Self Discharge	3% of capacity declined per month at (25°C)				
Capacity Affected by Temp.(20HR)	40°C	25°C	0°C	-15°C	
	102%	100%	85%	65%	
Charge Voltage(25°C)	Cycle use		Float use		
	14.4-15V(-30mV/ °C), max. Current: 18.75A		13.6-13.8V(-20mV/ °C)		

F.V/Time	1 HR	2 HR	3 HR	4 HR	5 HR	8 HR	10 HR	20 HR
1.75V	57.2	35.1	23.1	19.1	14.9	10.8	9.1	4.7
1.80V	55.8	34.5	22.5	18.6	14.7	10.6	9.0	4.6
1.85V	53.0	32.9	21.5	17.7	14.0	10.2	8.7	4.3
1.90V	51.0	31.9	20.8	17.1	13.6	9.9	8.5	4.1



ISO9001:2000 Certificate



G4M2006-0910-E-16



MH28539



RBRC

