

## CALCIUM FLAT PLATE

B A T T E R I E S



### Description

The Yuasa GU is one of the largest clear Flame Retardant flooded cells in the industry. Since 1978, the GU has become the standard in the telecommunications industry. It is ideal for central office and mobile telecom switching office applications. The GU is rated up to 3900 Ah in a space efficient configuration.

### Features

- Flat Plate construction-Calcium grid alloys. Well suited for long duration, float applications.
- Largest single cell battery (up to 3900 Ah) in a clear flame retardant jar.
- Optional Flame Retardant PVC (32% L.O.I.) - UL94-V0 rating, available on cover and container.
- Slide Lock™ Post Seal allows natural plate growth with out degrading post seal.
- Innovative tongue and groove jar to cover seal.
- Configurable with plates either parallel (optimize footprint & clean connectors while on closed circuit) or perpendicular (inspection of the element) to rack support rails.

MODEL

**EXIDE**

**GU**

**930 - 3900 Ah**

APPLICATIONS:

**COMMUNICATIONS  
CENTRAL OFFICE  
MICROWAVE  
MTSO**

### Specifications

**PLATES THICKNESS:**

POSITIVE: 0.30 in/7.6 mm  
NEGATIVE: 0.20 in/5.1 mm

**PLATE DIMENSIONS:**

|      |                |                |
|------|----------------|----------------|
|      | Height         | Width          |
| POS: | 17.6 in/447 mm | 12.7 in/323 mm |
| NEG: | 17.6 in/447 mm | 12.7 in/323 mm |

**SEDIMENT SPACE: 1.32 in/34 mm**

**ELECTROLYTE OVER PLATES:**

3.40 in/86 mm

**CONTAINER:**

Styrene Acrylonitrile Copolymer, GU-9 to 45.  
Available in optional PVC, L.O.I. 32, GU-15 to 45

**COVER:**

PVC, L.O.I. 32. UL 94-V0

**SEPARATORS:**

Microporous rubber

**RETAINERS:**

"Vitrex" - glass fiber

**POST TYPE:**

Cast Lead Posts  
GU-9 through 13 - Single Post  
GU-15 through 45 - Double Posts

**POST SEAL TYPE:**

Slide-Lock™

**PLATE SUSPENSION TYPE:**

**POSITIVE:**  
Bridge hung

**NEGATIVE:**  
Bottom supported

**ELECTROLYTE WITHDRAWAL TUBE:**

One per cell

**VENT TYPE:**

Flame Arrestor, Fused Alumina

**FLOAT VOLTAGE SETTING:**

ACCEPTABLE MIN/MAX: 2.17/2.26 VPC

RECOMMENDED: 2.25 VPC

**SPECIFIC GRAVITY: 1.215 (1.250 available on request)**

**BOLT CONNECTORS:**

Stainless steel, standard English  
measure, hex-head

**INTERCELL CONNECTORS:**

Lead-plated copper

# Capacities - Dimensions - Weights

| TYPE*  | Nom. Ah CAP. | OVERALL DIMENSIONS*** |     |           |     |            |     | WEIGHTS - VOLUMES |     |                 |     |                                |     |      |    |  | OUTLINE DRAWING SEE CATALOG SECTION |
|--------|--------------|-----------------------|-----|-----------|-----|------------|-----|-------------------|-----|-----------------|-----|--------------------------------|-----|------|----|--|-------------------------------------|
|        |              | LENGTH (L)**          |     | WIDTH (W) |     | HEIGHT (H) |     | UNPACKED          |     | DOMESTIC PACKED |     | ELECTROLYTE ONLY<br>1.215 S.G. |     |      |    |  |                                     |
|        |              | in                    | mm  | in        | mm  | in         | mm  | lbs               | kgs | lbs             | kgs | lbs                            | lbs | lbs  | /  |  |                                     |
| 2GU-9  | 930          | 12.4                  | 315 | 15.1      | 384 | 27.3       | 693 | 367               | 166 | 387             | 175 | 136                            | 62  | 13.6 | 51 |  |                                     |
| 2GU-11 | 1080         | 12.4                  | 315 | 15.1      | 384 | 27.3       | 693 | 402               | 182 | 422             | 191 | 127                            | 58  | 12.7 | 48 |  |                                     |
| 2GU-13 | 1220         | 12.4                  | 315 | 15.1      | 384 | 27.3       | 693 | 436               | 198 | 456             | 207 | 118                            | 53  | 11.8 | 45 |  |                                     |
| GU-15  | 1680         | 12.4                  | 315 | 15.1      | 384 | 27.3       | 693 | 347               | 157 | 367             | 166 | 144                            | 65  | 14.4 | 54 |  |                                     |
| GU-17  | 1800         | 12.4                  | 315 | 15.1      | 384 | 27.3       | 693 | 364               | 165 | 384             | 174 | 140                            | 63  | 14.0 | 53 |  |                                     |
| GU-19  | 1960         | 12.4                  | 315 | 15.1      | 384 | 27.3       | 693 | 382               | 173 | 402             | 182 | 136                            | 62  | 13.6 | 51 |  |                                     |
| GU-21  | 2110         | 12.4                  | 315 | 15.1      | 384 | 27.3       | 693 | 401               | 182 | 421             | 191 | 132                            | 60  | 13.2 | 50 |  |                                     |
| GU-23  | 2540         | 15.1                  | 384 | 16.6      | 422 | 27.3       | 693 | 483               | 219 | 505             | 229 | 185                            | 84  | 18.5 | 70 |  |                                     |
| GU-25  | 2720         | 15.1                  | 384 | 16.6      | 422 | 27.3       | 693 | 501               | 227 | 523             | 237 | 181                            | 82  | 18.1 | 68 |  |                                     |
| GU-27  | 2880         | 15.1                  | 384 | 16.6      | 422 | 27.3       | 693 | 520               | 236 | 542             | 246 | 177                            | 80  | 17.7 | 67 |  |                                     |
| GU-29  | 3030         | 15.1                  | 384 | 16.6      | 422 | 27.3       | 693 | 538               | 244 | 560             | 254 | 173                            | 78  | 17.3 | 65 |  |                                     |
| GU-31  | 3180         | 15.1                  | 384 | 16.6      | 422 | 27.3       | 693 | 557               | 253 | 579             | 263 | 169                            | 77  | 16.9 | 64 |  |                                     |
| GU-33  | 3300         | 15.1                  | 384 | 16.6      | 422 | 27.3       | 693 | 583               | 264 | 605             | 274 | 165                            | 75  | 16.5 | 62 |  |                                     |
| GU-35  | 3430         | 15.1                  | 384 | 16.6      | 422 | 27.3       | 693 | 601               | 273 | 623             | 282 | 161                            | 73  | 16.1 | 61 |  |                                     |
| GU-37  | 3540         | 15.1                  | 384 | 16.6      | 422 | 27.3       | 693 | 620               | 281 | 642             | 291 | 157                            | 71  | 15.7 | 59 |  |                                     |
| GU-39  | 3650         | 15.1                  | 384 | 16.6      | 422 | 27.3       | 693 | 638               | 289 | 660             | 299 | 153                            | 69  | 15.3 | 58 |  |                                     |
| GU-41  | 3730         | 15.1                  | 384 | 16.6      | 422 | 27.3       | 693 | 657               | 298 | 679             | 308 | 149                            | 67  | 14.9 | 56 |  |                                     |
| GU-43  | 3820         | 15.1                  | 384 | 16.6      | 422 | 27.3       | 693 | 675               | 306 | 697             | 316 | 144                            | 65  | 14.4 | 55 |  |                                     |
| GU-45  | 3900         | 15.1                  | 384 | 16.6      | 422 | 27.3       | 693 | 693               | 314 | 715             | 324 | 140                            | 63  | 14.0 | 53 |  |                                     |

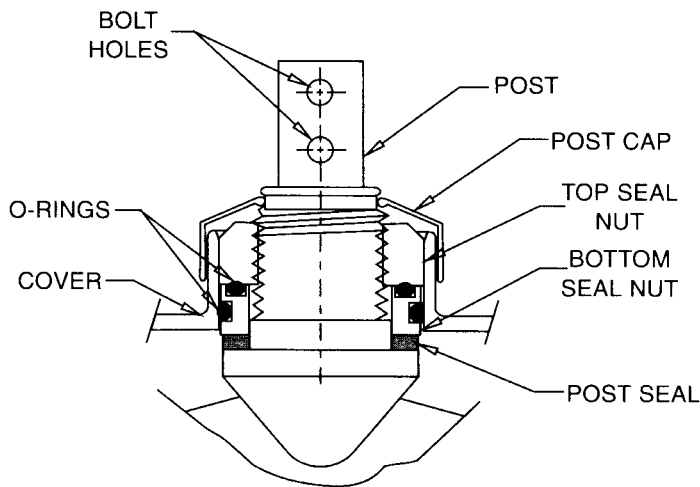
57.40

\* Suffix number indicates total plates per cell. Prefix indicates number of cells per jar.

\*\* 0.25" must be added between cells for spacing purposes when calculating total battery length.

\*\*\*Overall Dimensions represent the GU-9 thru 21 with plates oriented perpendicular to rack rails and GU-23 thru 45 with plates oriented parallel to rack rails. For optional GU-23 thru 45 with plates perpendicular to rack rails, length and width dimensions must be switched.

## Patented Slide-Lock™ Post Seal



# AVERAGE CELL PERFORMANCE DATA\* (Discharge Rates in Amperes\*\*)

| TYPE                              | NOM.<br>Ah<br>CAP. <sup>1</sup> | 72<br>HR | 24<br>HR | 12<br>HR | 8<br>HR | 5<br>HR | 4<br>HR | 3<br>HR | 2<br>HR | 1.5<br>HR | 1<br>HR | 30<br>MIN | 15<br>MIN | 1<br>MIN | 1MIN <sup>2</sup><br>TO 1.50<br>VPC |
|-----------------------------------|---------------------------------|----------|----------|----------|---------|---------|---------|---------|---------|-----------|---------|-----------|-----------|----------|-------------------------------------|
| <b>TO 1.75 END VOLTS PER CELL</b> |                                 |          |          |          |         |         |         |         |         |           |         |           |           |          |                                     |
| GU-9                              | 930                             | 18.8     | 49       | 86       | 116     | 157     | 187     | 232     | 297     | 338       | 392     | 470       | 542       | 649      | 1181                                |
| GU-11                             | 1080                            | 21.8     | 57       | 100      | 135     | 188     | 224     | 276     | 355     | 406       | 477     | 576       | 659       | 790      | 1442                                |
| GU-13                             | 1220                            | 24.3     | 64       | 114      | 152     | 211     | 256     | 316     | 409     | 469       | 556     | 672       | 771       | 924      | 1688                                |
| GU-15                             | 1680                            | 33.9     | 88       | 156      | 210     | 287     | 343     | 431     | 547     | 622       | 695     | 829       | 960       | 1150     | 2093                                |
| GU-17                             | 1800                            | 36.5     | 96       | 169      | 225     | 316     | 377     | 466     | 593     | 677       | 785     | 940       | 1084      | 1299     | 2364                                |
| GU-19                             | 1960                            | 39.8     | 105      | 184      | 245     | 350     | 414     | 512     | 653     | 748       | 865     | 1051      | 1204      | 1443     | 2629                                |
| GU-21                             | 2110                            | 43.0     | 113      | 199      | 264     | 378     | 451     | 555     | 712     | 813       | 955     | 1152      | 1320      | 1582     | 2886                                |
| GU-23                             | 2540                            | 51.7     | 134      | 242      | 318     | 432     | 516     | 638     | 765     | 878       | 1033    | 1251      | 1431      | 1692     | 3089                                |
| GU-25                             | 2720                            | 54.4     | 142      | 256      | 340     | 466     | 552     | 682     | 818     | 939       | 1111    | 1345      | 1542      | 1824     | 3333                                |
| GU-27                             | 2880                            | 56.7     | 149      | 270      | 360     | 495     | 590     | 725     | 865     | 997       | 1186    | 1437      | 1645      | 1946     | 3557                                |
| GU-29                             | 3030                            | 58.7     | 155      | 284      | 379     | 523     | 626     | 768     | 912     | 1051      | 1258    | 1525      | 1748      | 2068     | 3782                                |
| GU-31                             | 3180                            | 60.4     | 161      | 296      | 397     | 546     | 660     | 811     | 956     | 1101      | 1326    | 1610      | 1846      | 2184     | 3997                                |
| GU-33                             | 3300                            | 60.5     | 164      | 301      | 412     | 556     | 663     | 816     | 1014    | 1128      | 1345    | 1681      | 1928      | 2348     | 4346                                |
| GU-35                             | 3430                            | 61.4     | 167      | 310      | 429     | 578     | 691     | 840     | 1051    | 1173      | 1405    | 1759      | 2018      | 2457     | 4551                                |
| GU-37                             | 3540                            | 61.9     | 171      | 318      | 443     | 598     | 718     | 862     | 1085    | 1215      | 1462    | 1835      | 2106      | 2565     | 4754                                |
| GU-39                             | 3650                            | 62.1     | 172      | 324      | 456     | 617     | 744     | 881     | 1115    | 1254      | 1516    | 1906      | 2188      | 2665     | 4946                                |
| GU-41                             | 3730                            | 62.1     | 174      | 330      | 466     | 635     | 767     | 896     | 1143    | 1290      | 1567    | 1978      | 2267      | 2761     | 5136                                |
| GU-43                             | 3820                            | 62.1     | 175      | 335      | 478     | 651     | 789     | 908     | 1168    | 1323      | 1616    | 2041      | 2345      | 2856     | 5319                                |
| GU-45                             | 3900                            | 62.1     | 176      | 338      | 487     | 665     | 810     | 918     | 1190    | 1353      | 1661    | 2104      | 2419      | 2946     | 5481                                |
| <b>TO 1.81 END VOLTS PER CELL</b> |                                 |          |          |          |         |         |         |         |         |           |         |           |           |          |                                     |
| GU-9                              | 930                             |          |          | 82       | 110     | 147     | 174     | 213     | 267     | 297       | 333     | 380       | 422       |          |                                     |
| GU-11                             | 1080                            |          |          | 96       | 128     | 176     | 207     | 253     | 319     | 357       | 405     | 466       | 514       |          |                                     |
| GU-13                             | 1220                            |          |          | 109      | 144     | 198     | 238     | 290     | 368     | 412       | 472     | 544       | 601       |          |                                     |
| GU-15                             | 1680                            |          |          | 149      | 198     | 270     | 318     | 394     | 491     | 546       | 591     | 671       | 749       |          |                                     |
| GU-17                             | 1800                            |          |          | 162      | 213     | 297     | 350     | 427     | 534     | 595       | 667     | 760       | 845       |          |                                     |
| GU-19                             | 1960                            |          |          | 176      | 232     | 329     | 384     | 471     | 587     | 658       | 735     | 851       | 939       |          |                                     |
| GU-21                             | 2110                            |          |          | 191      | 250     | 355     | 419     | 510     | 640     | 715       | 811     | 932       | 1029      |          |                                     |
| GU-23                             | 2540                            |          |          | 232      | 302     | 406     | 479     | 586     | 688     | 772       | 877     | 1012      | 1116      |          |                                     |
| GU-25                             | 2720                            |          |          | 245      | 323     | 438     | 513     | 627     | 735     | 826       | 944     | 1089      | 1202      |          |                                     |
| GU-27                             | 2880                            |          |          | 259      | 342     | 465     | 548     | 666     | 779     | 877       | 1007    | 1164      | 1282      |          |                                     |
| GU-29                             | 3030                            |          |          | 272      | 360     | 491     | 582     | 707     | 820     | 924       | 1069    | 1235      | 1363      |          |                                     |
| GU-31                             | 3180                            |          |          | 284      | 377     | 513     | 614     | 746     | 860     | 968       | 1127    | 1304      | 1440      |          |                                     |
| GU-33                             | 3300                            |          |          | 288      | 391     | 522     | 616     | 750     | 912     | 992       | 1143    | 1362      | 1503      |          |                                     |
| GU-35                             | 3430                            |          |          | 297      | 407     | 543     | 643     | 773     | 946     | 1032      | 1194    | 1425      | 1574      |          |                                     |
| GU-37                             | 3540                            |          |          | 305      | 420     | 562     | 667     | 793     | 975     | 1069      | 1243    | 1486      | 1636      |          |                                     |
| GU-39                             | 3650                            |          |          | 311      | 433     | 579     | 691     | 810     | 1003    | 1103      | 1288    | 1543      | 1706      |          |                                     |
| GU-41                             | 3730                            |          |          | 316      | 442     | 596     | 713     | 824     | 1029    | 1135      | 1332    | 1602      | 1768      |          |                                     |
| GU-43                             | 3820                            |          |          | 321      | 454     | 611     | 733     | 835     | 1051    | 1164      | 1373    | 1653      | 1829      |          |                                     |
| GU-45                             | 3900                            |          |          | 324      | 461     | 625     | 752     | 844     | 1070    | 1190      | 1412    | 1704      | 1886      |          |                                     |

\*Ampere values listed represent 100% of the cell's capacity. Initial capacity shall be a minimum of 90% of these values per IEEE 450.

\*\*1.215 S.G. electrolyte at 77°F (25°C) includes intercell connector drop.

<sup>1</sup>Nominal AMP hour capacity at the 8 hour rate.

<sup>2</sup>One minute rates to 1.50 VPC should only be used for short circuit calculations and not as performance data.

All data subject to change without notice.

# AVERAGE CELL PERFORMANCE DATA\* (Discharge Rates in Amperes\*\*)

| TYPE  | NOM.<br>Ah<br>CAP. <sup>1</sup>   | 72<br>HR | 24<br>HR | 12<br>HR | 8<br>HR | 5<br>HR | 4<br>HR | 3<br>HR | 2<br>HR | 1.5<br>HR | 1<br>HR | 30<br>MIN | 15<br>MIN |
|-------|-----------------------------------|----------|----------|----------|---------|---------|---------|---------|---------|-----------|---------|-----------|-----------|
|       | <b>TO 1.84 END VOLTS PER CELL</b> |          |          |          |         |         |         |         |         |           |         |           |           |
| GU-9  | 930                               |          |          | 78       | 104     | 138     | 163     | 197     | 243     | 267       | 293     | 328       | 357       |
| GU-11 | 1080                              |          |          | 91       | 121     | 165     | 194     | 234     | 290     | 320       | 357     | 403       | 435       |
| GU-13 | 1220                              |          |          | 103      | 136     | 185     | 222     | 268     | 335     | 370       | 416     | 470       | 508       |
| GU-15 | 1680                              |          |          | 142      | 168     | 252     | 298     | 366     | 448     | 491       | 521     | 580       | 633       |
| GU-17 | 1800                              |          |          | 153      | 202     | 278     | 328     | 396     | 486     | 534       | 588     | 657       | 715       |
| GU-19 | 1960                              |          |          | 167      | 220     | 308     | 359     | 435     | 535     | 590       | 649     | 735       | 794       |
| GU-21 | 2110                              |          |          | 181      | 237     | 332     | 392     | 472     | 583     | 642       | 715     | 806       | 871       |
| GU-23 | 2540                              |          |          | 220      | 286     | 380     | 448     | 542     | 627     | 693       | 774     | 876       | 944       |
| GU-25 | 2720                              |          |          | 232      | 306     | 410     | 480     | 579     | 671     | 741       | 833     | 941       | 1017      |
| GU-27 | 2880                              |          |          | 245      | 324     | 435     | 513     | 616     | 709     | 787       | 889     | 1005      | 1086      |
| GU-29 | 3030                              |          |          | 258      | 341     | 460     | 544     | 653     | 747     | 830       | 943     | 1067      | 1153      |
| GU-31 | 3180                              |          |          | 269      | 357     | 480     | 574     | 688     | 783     | 869       | 995     | 1127      | 1218      |
| GU-33 | 3300                              |          |          | 273      | 370     | 489     | 577     | 693     | 830     | 891       | 1009    | 1176      | 1272      |
| GU-35 | 3430                              |          |          | 282      | 386     | 508     | 600     | 714     | 861     | 926       | 1053    | 1231      | 1332      |
| GU-37 | 3540                              |          |          | 289      | 398     | 526     | 624     | 732     | 889     | 959       | 1096    | 1284      | 1389      |
| GU-39 | 3650                              |          |          | 294      | 410     | 542     | 647     | 748     | 915     | 990       | 1137    | 1334      | 1443      |
| GU-41 | 3730                              |          |          | 300      | 419     | 558     | 667     | 761     | 937     | 1019      | 1175    | 1384      | 1495      |
| GU-43 | 3820                              |          |          | 304      | 430     | 572     | 686     | 771     | 957     | 1045      | 1211    | 1428      | 1547      |
| GU-45 | 3900                              |          |          | 307      | 437     | 585     | 703     | 780     | 975     | 1068      | 1245    | 1472      | 1595      |
|       | <b>TO 1.88 END VOLTS PER CELL</b> |          |          |          |         |         |         |         |         |           |         |           |           |
| GU-9  | 930                               |          |          | 72       | 95      | 125     | 145     | 173     | 207     | 226       | 243     | 258       | 276       |
| GU-11 | 1080                              |          |          | 84       | 110     | 150     | 174     | 207     | 248     | 272       | 295     | 317       | 336       |
| GU-13 | 1220                              |          |          | 95       | 124     | 168     | 200     | 237     | 285     | 314       | 344     | 369       | 392       |
| GU-15 | 1680                              |          |          | 131      | 172     | 229     | 267     | 322     | 382     | 416       | 430     | 455       | 490       |
| GU-17 | 1800                              |          |          | 141      | 184     | 252     | 294     | 349     | 415     | 453       | 486     | 517       | 552       |
| GU-19 | 1960                              |          |          | 154      | 200     | 280     | 322     | 383     | 456     | 501       | 536     | 578       | 613       |
| GU-21 | 2110                              |          |          | 167      | 216     | 302     | 351     | 416     | 497     | 544       | 592     | 634       | 672       |
| GU-23 | 2540                              |          |          | 203      | 260     | 345     | 402     | 478     | 536     | 588       | 639     | 688       | 729       |
| GU-25 | 2720                              |          |          | 215      | 278     | 372     | 431     | 511     | 572     | 629       | 689     | 740       | 786       |
| GU-27 | 2880                              |          |          | 226      | 295     | 396     | 459     | 544     | 606     | 667       | 734     | 790       | 839       |
| GU-29 | 3030                              |          |          | 238      | 310     | 418     | 488     | 576     | 638     | 704       | 779     | 839       | 891       |
| GU-31 | 3180                              |          |          | 248      | 325     | 436     | 514     | 608     | 668     | 737       | 822     | 885       | 941       |
| GU-33 | 3300                              |          |          | 252      | 337     | 444     | 517     | 612     | 709     | 755       | 833     | 924       | 983       |
| GU-35 | 3430                              |          |          | 260      | 351     | 462     | 539     | 630     | 735     | 785       | 870     | 967       | 1029      |
| GU-37 | 3540                              |          |          | 267      | 363     | 478     | 559     | 646     | 759     | 814       | 906     | 1009      | 1073      |
| GU-39 | 3650                              |          |          | 272      | 373     | 493     | 580     | 660     | 781     | 840       | 939     | 1048      | 1115      |
| GU-41 | 3730                              |          |          | 277      | 382     | 508     | 598     | 672     | 800     | 864       | 972     | 1087      | 1156      |
| GU-43 | 3820                              |          |          | 281      | 391     | 520     | 615     | 681     | 817     | 886       | 1001    | 1122      | 1195      |
| GU-45 | 3900                              |          |          | 283      | 398     | 532     | 631     | 688     | 832     | 906       | 1030    | 1156      | 1233      |

\*Ampere values listed represent 100% of the cell's capacity. Initial capacity shall be a minimum of 90% of these values per IEEE 450.

\*\*1.215 S.G. electrolyte at 77°F (25°C) includes intercell connector drop.

<sup>1</sup>Nominal AMP hour capacity at the 8 hour rate.

All data subject to change without notice.

AVERAGE CAPACITY OF MEAN — SIZE  
CELLS INCLUDING CONNECTORS

S-1063

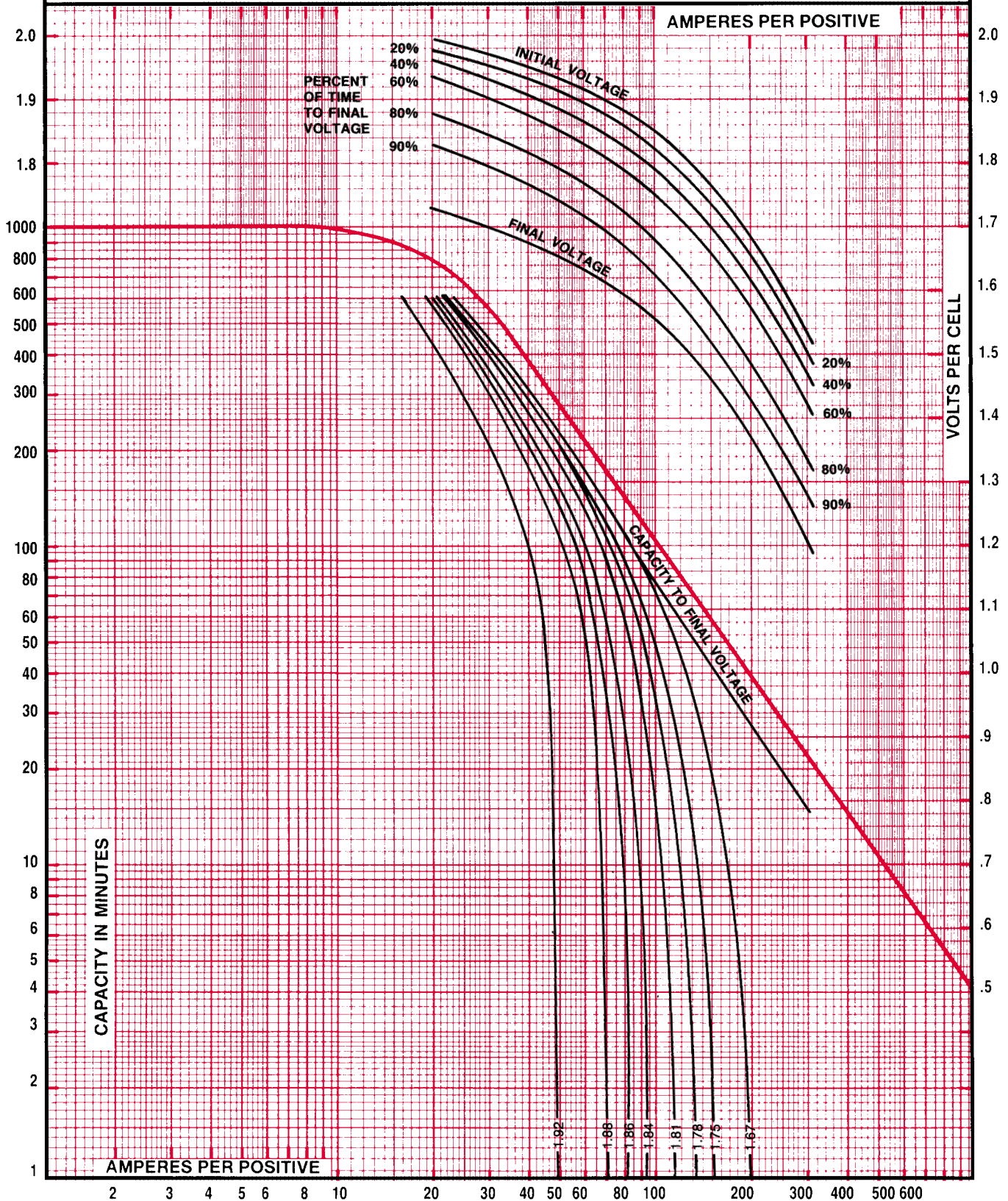
*EnerSys*

TYPE: GU-9 to 21

Temp.  
77°F (25°C)

DATE: 9/1/83

SP. GR.  
1.215



AVERAGE CAPACITY OF MEAN — SIZE  
CELLS INCLUDING CONNECTORS

S-1064

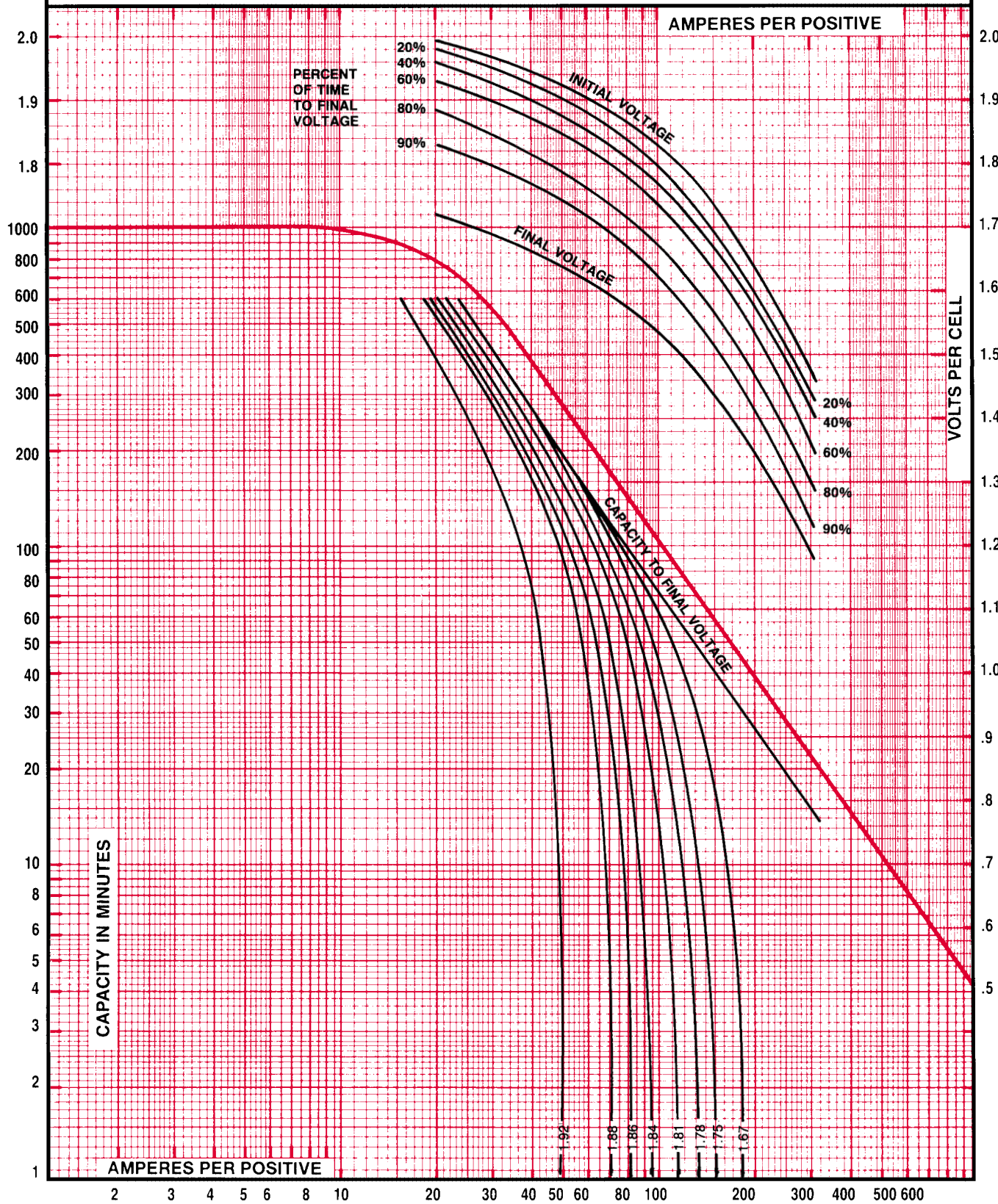
*EnerSys*

TYPE: GU-23 to 31

Temp.  
77°F (25°C)

DATE: 1/26/84

SP. GR.  
1.215



AVERAGE CAPACITY OF MEAN — SIZE  
CELLS INCLUDING CONNECTORS

S-1065

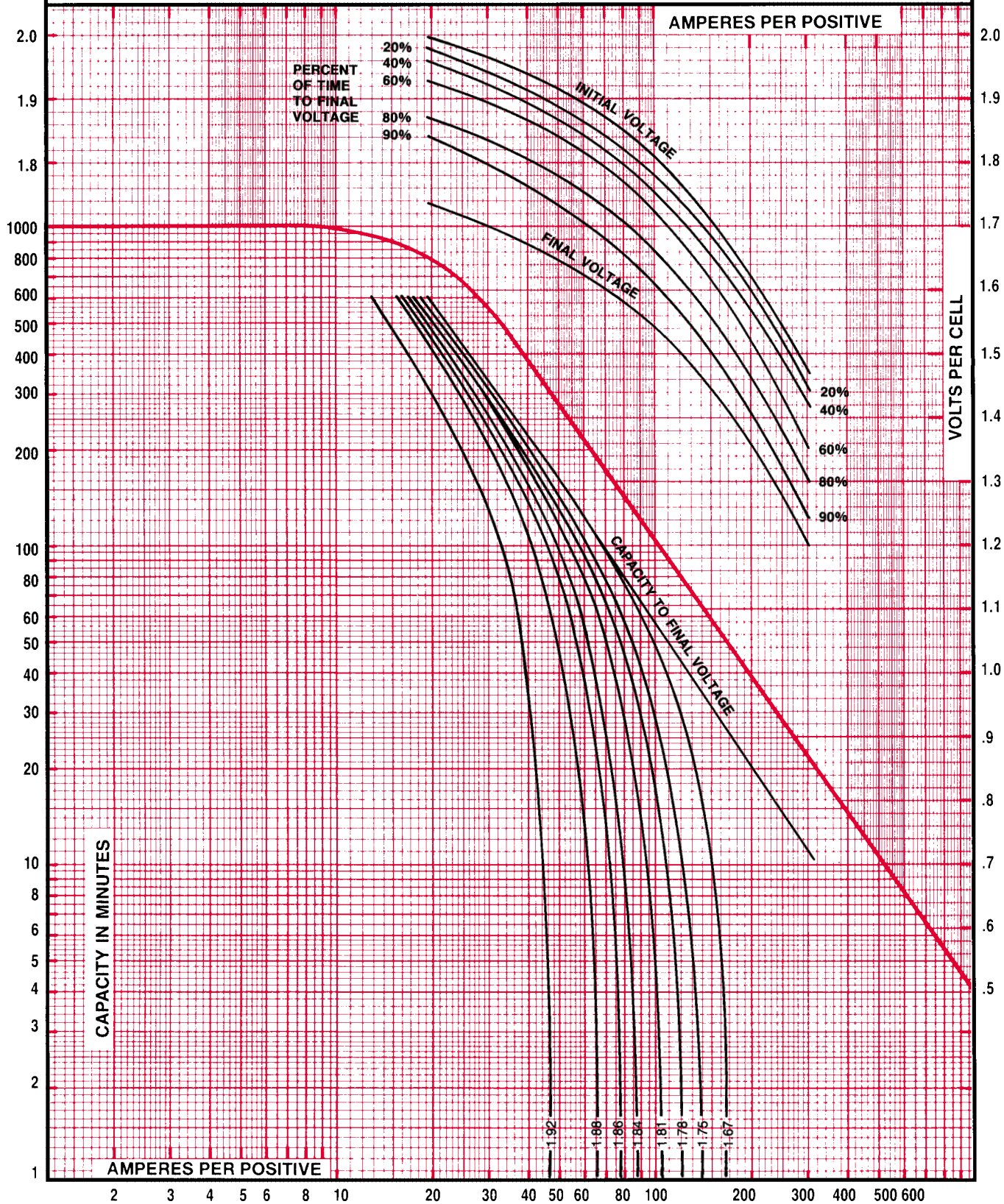
*EnerSys*

TYPE: GU-33 to 45

Temp.  
77°F (25°C)

DATE: 1/26/84

SP. GR.  
1.215



MODEL  
**EXIDE**  
**GU**

**Heritage™**

**CALCIUM FLAT PLATE**

B A T T E R I E S

## Accessories

|  | CATALOG NUMBER |
|--|----------------|
| †PORTABLE HYDROMETER                               | 81332          |
| †HYDROMETER HOLDER - WALL MOUNT                    | 27717          |
| †THERMOMETER (Portable or Flame Arrestor Mounting) | 88330          |
| †CELL NUMBER SET                                   |                |
| 1-12   | 802360         |
| 1-24   | 802361         |
| 1-60   | 802362         |
| 1-120  | 802363         |
| 1-240  | 802364         |
| 1-300  | 802365         |
| †CELL LIFTING DEVICE:                              |                |
| GU-9 thru 13                                       | 84974          |
| GU-15 thru 45                                      | 84973          |
| FLAME ARRESTOR (Supplied With Each Cell)           |                |
| GU-9 thru 15                                       | 83437          |
| GU-17 thru 45                                      | 83437          |

†Included with 12 or more cells

For complete information about these and all other accessories, see Catalog **SECTION 80.05**.

NOTE: All inter-cell, inter-tier, inter-step, end-to-end inter-rack, back-to-back inter-rack connectors, terminal lugs, and terminal plates are included with every battery. Across-aisle inter-rack connectors are not included.

All data subject to change without notice.

Represented by:

When ordering new batteries, also remember to properly recycle your old lead batteries. Federal and state regulations require lead-acid batteries be recycled. Yuasa's nationwide service organization can arrange pickup, transportation to and recycling at any one of our company affiliated smelters. Call 1-800-972-7372 for more information.



Corporate Office: P.O. Box 14145, Reading, PA 19612-4145  
610-208-1991 • 800-538-3627  
FAX 610-372-8613

**Sales Offices**

Eastern Region: 215-491-3700 • 800-346-4402

FAX 215-491-2304

Western Region: 510-887-2046 • 888-887-2046

FAX 510-887-6309

International: 610-208-1847

FAX 610 208 1851

Yuasa Canada: 905-790-1212

FAX 905-790-7070

Yuasa Argentina: 54-1-736-3000

FAX 54-1-736-3200

Yuasa de Mexico: 52-83-656-620

FAX 52-83-656-621

Acumuladores Narvit S.A., Brazil: 55-11-6412-7522

FAX 55-11-6481-4019

Visit us on the web at:

[www.yuasastationary.com](http://www.yuasastationary.com)