



# **BP-XR2U480A**

External Battery Pack

User & Installation Manual

**Table of Contents**

**Product Overview..... 3**

**Assembly.....3**

    Dismount the Cabinet Shell.....3

    Battery Installation and Connection.....5

    Fuse in Battery Pack.....6

**4 Post Rail Mounting.....7**

**Multiple Battery Pack Connections.....8**

**Installation and Setup.....8**

    Unpacking & Inspection.....8

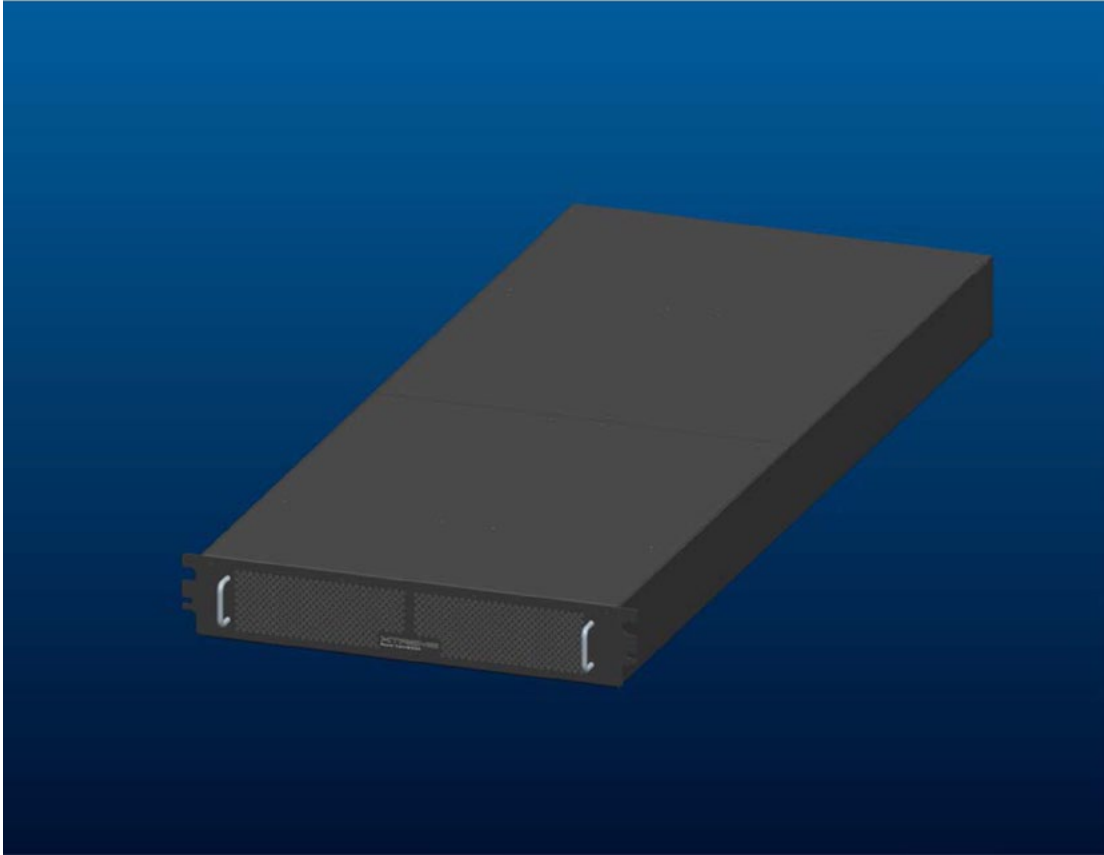
    Selecting Installation Position.....8

    Enclosure Installation.....9

    Battery Module Installation.....9

## Product Overview

The BP-XR2U480A battery pack dimension is 442W x 1086D x 86H mm (17.4 x 42.8 x 3.4 in) and unit weight is 88.5 kgs (195 lbs). It includes battery connection cables, breaker, fuse, terminal, etc, with a maximum capacity of 40 pcs 12V/5AH batteries inside. The battery connection could be configured to output  $\pm 240V$ , two groups batteries connect in series as BAT+, N, BAT-.

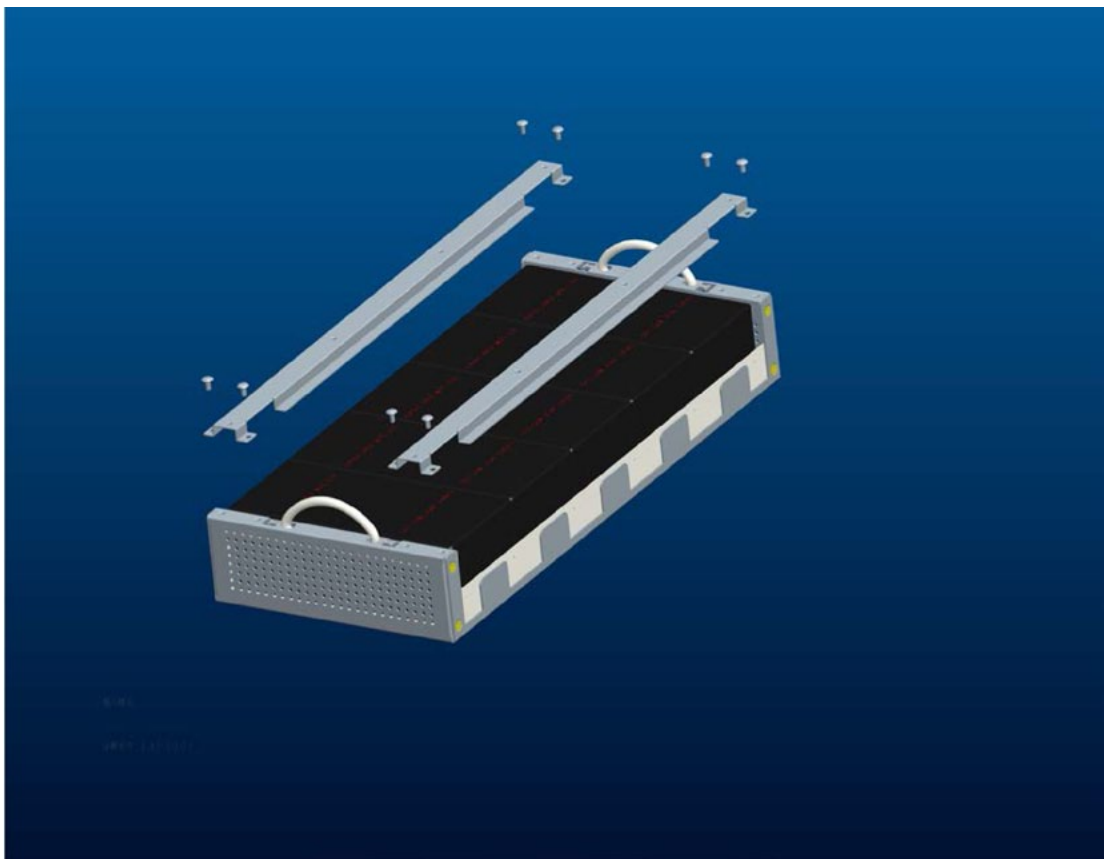
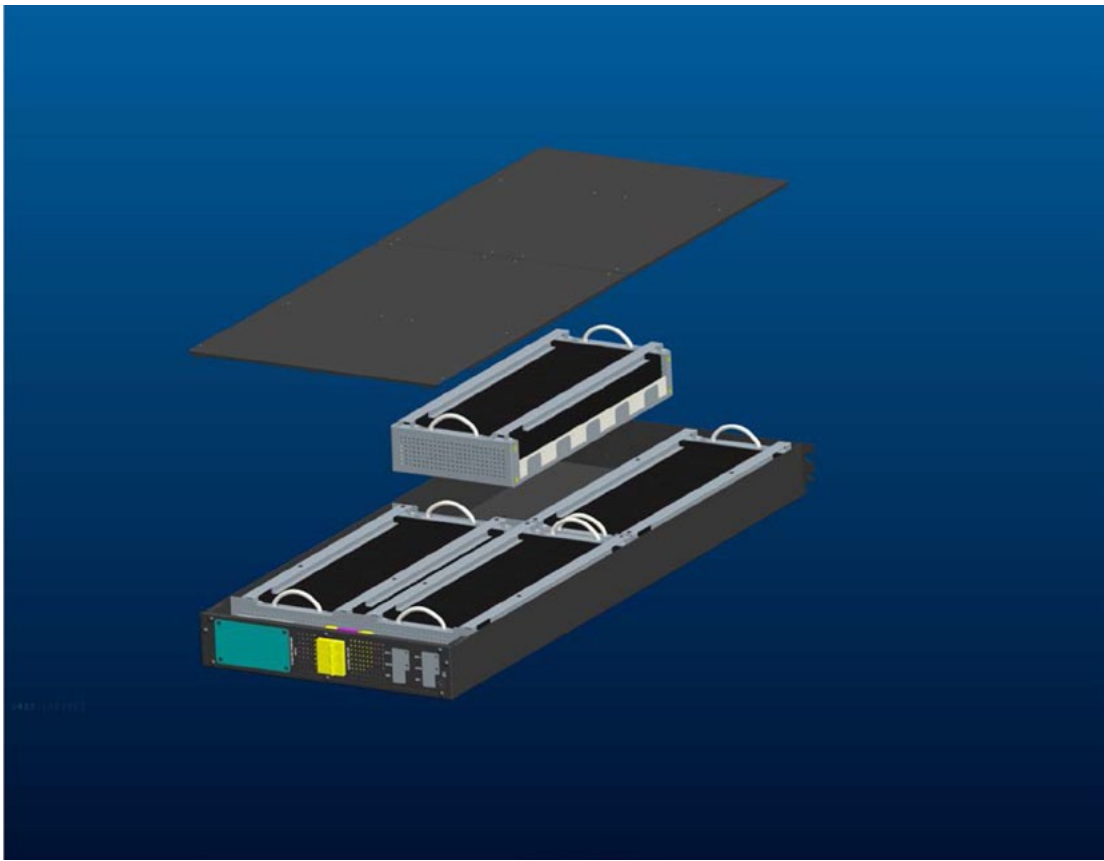


Complete BP-XR2U480A cabinet

## Assembly

### *Dismount the Cabinet Shell*

Put the battery pack on a level, remove the battery pack top covers, pull out the battery tray and remove the battery tray layering for easier battery installation and connection, as shown below.

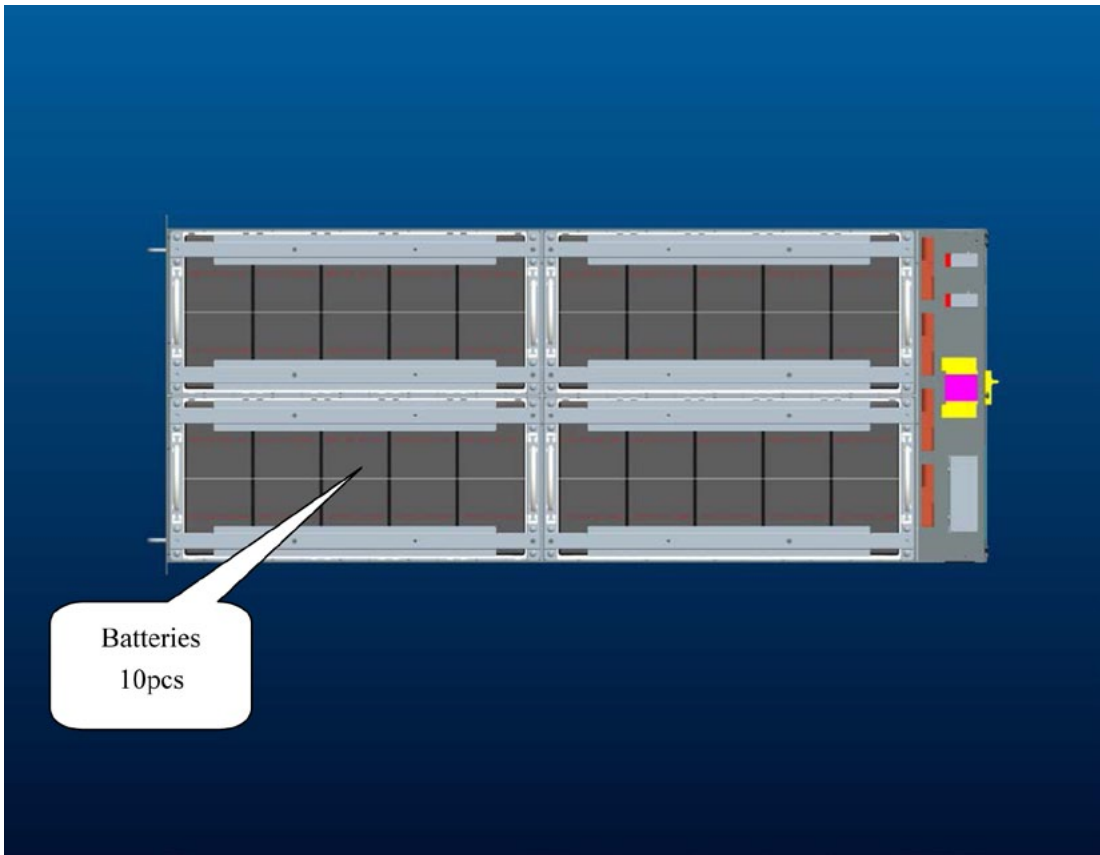


### **Battery Installation and Connection**

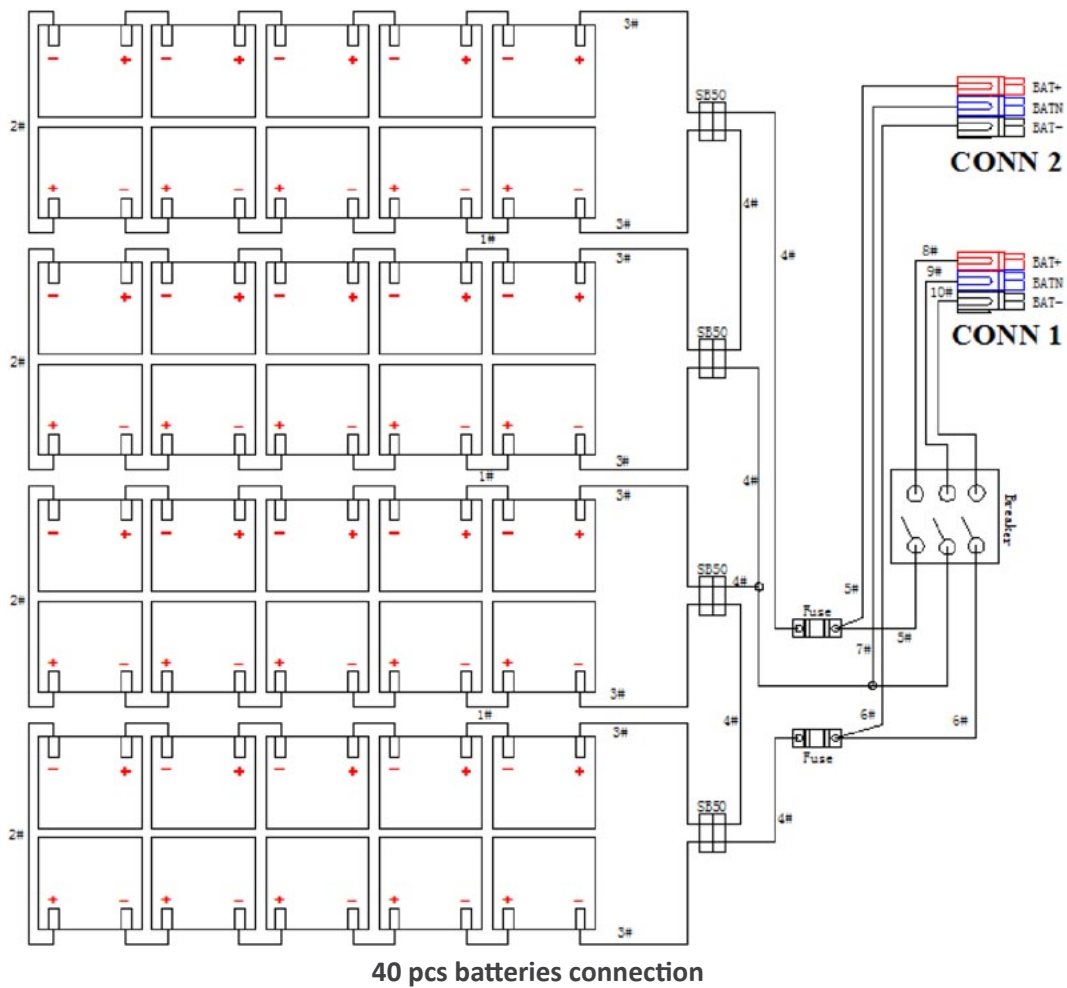
Users need 40 pcs batteries, divide into 2 groups. Each group has 20 pcs batteries in series, as (BAT+ N BAT-) shown below.

#### **40 pcs batteries installation and connection:**

Each battery tray fit 10pcs batteries, then connect the batteries as shown in below pictures.



**40pcs batteries installation**

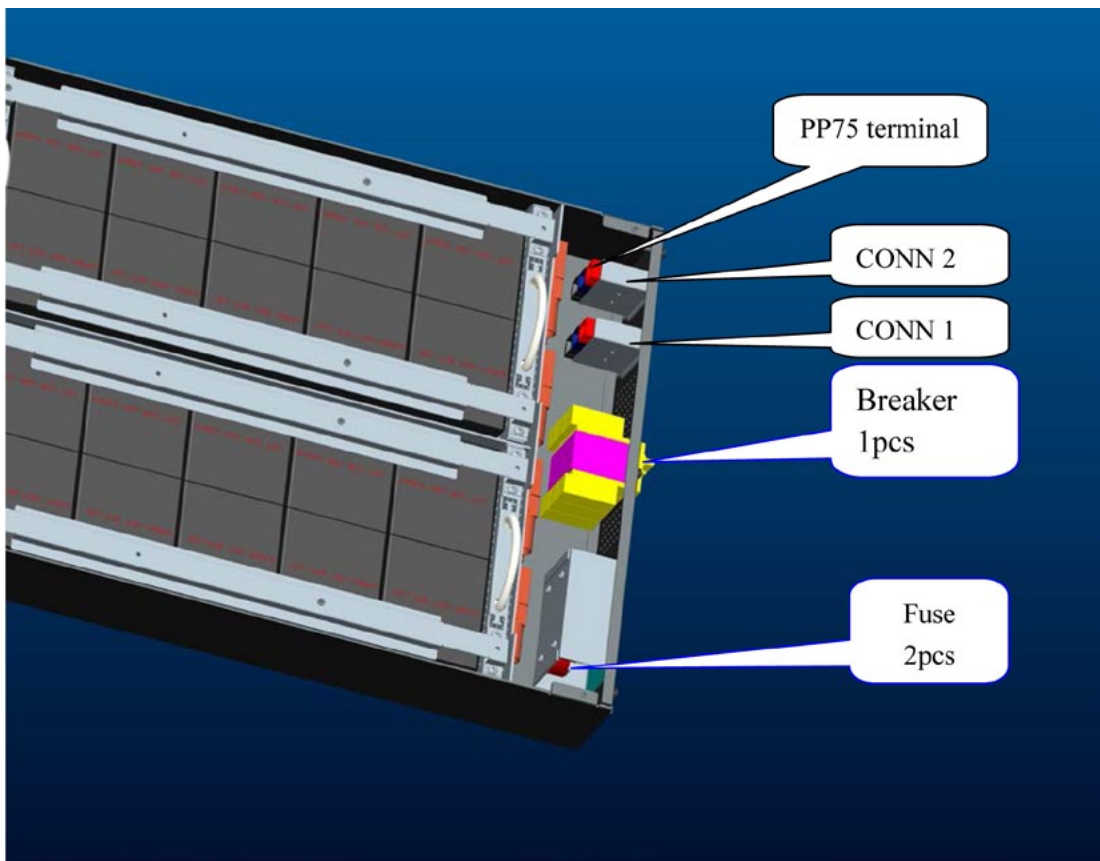


After the battery installation and connection done, check if BAT+ to N & N to BAT- voltages are correct with multi-meter or other equipment. Install the cover if the voltages are correct.

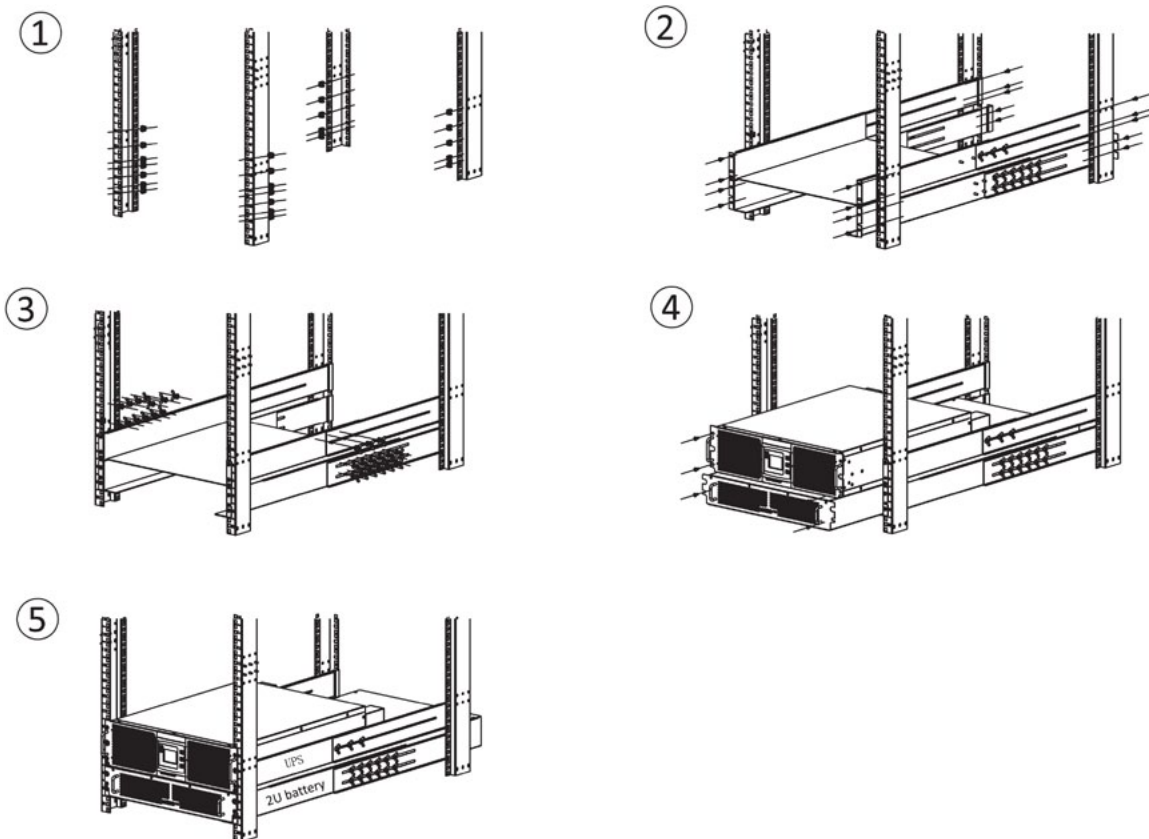
**Note:** Battery “+” “-” poles cannot be reversed, also cannot short the battery “+” “-” poles, otherwise batteries would be damaged or other accidents would happen. Don’t touch the battery “+” “-” poles at the same time. It’s better only single man make the operation.

***Fuse in Battery Pack***

The battery pack has 2 x fuses inside as shown in below picture.



### 4 Post Rail Mounting



## Multiple Battery Pack Connections



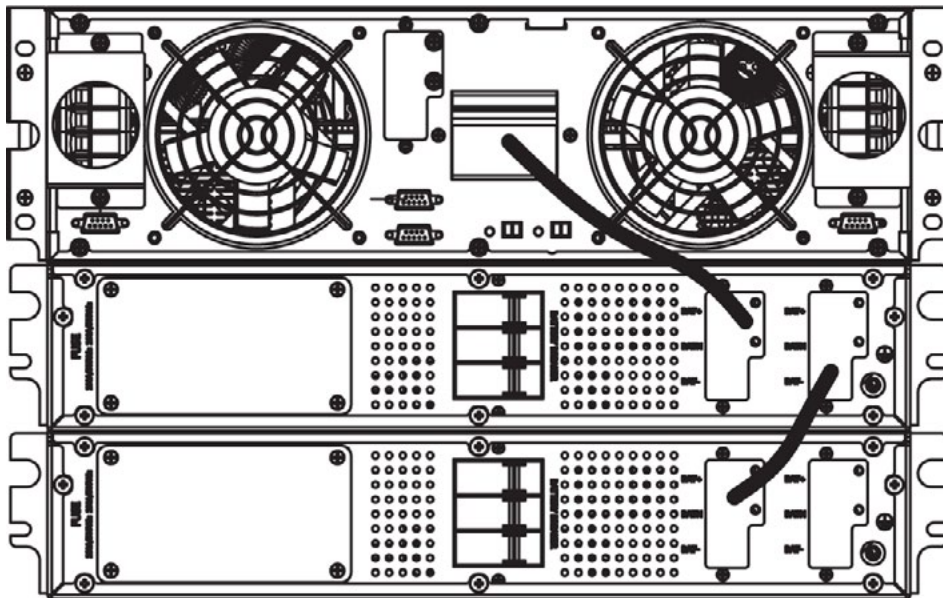
### CAUTION!

Ensure correct polarity of the battery string series connection. DO NOT mix batteries with different capacity or different brands, or new or old batteries.



### WARNING!

ENSURE CORRECT POLARITY OF STRING END CONNECTIONS TO THE BATTERY CIRCUIT BREAKER, AND FROM THE BATTERY CIRCUIT BREAKER TO THE UPS TERMINALS (I.E. (+) TO (+) / (-) TO (-) / (N) TO (N)). DISCONNECT ONE OR MORE BATTERY CELL LINKS IN EACH TIER. DO NOT RECONNECT THESE LINKS AND DO NOT CLOSE THE BATTERY CIRCUIT BREAKER UNLESS ALL CONNECTIONS ARE PROPERLY CHECKED AND APPROVED.



R91-20K to BP-XR2U480A battery connection

## Installation and Setup

**Note:** Before installation, please inspect the unit. Be sure that nothing inside the package is damaged. Please keep the original packing material in a safe place for future use.

### *Unpacking & Inspection*

**Attention:** Any damage to packing should be noted at the time of receipt with the delivery carrier

Remove the shelf kit, battery enclosure, and battery modules from the packaging.

**Note:** The battery modules are very heavy, be cautious when unpacking and lifting the unit to avoid injury.

### *Selecting Installation Position*

It is necessary to select a proper environment to install the unit, in order to minimize the possibility of damage to the battery system and extend the life of the batteries. Please follow the instructions below:



1. Do not block the air-flow to the ventilation openings of the unit.
2. Please ensure the installation site environmental conditions are in accordance with the unit's working specifications to avoid overheat and excessive moisture.
3. Do not place the unit in a dusty or corrosive environment or near any flammable objects.
4. This unit is not designed for outdoor use.

### ***Enclosure Installation***

**Note:** Shelf kit must be installed per battery enclosure.

1. Add moveable cage nuts to desired front and rear location for shelf kit and battery enclosure.
2. Attach shelf kit into the rack with screws at front and rear.
3. Slide the battery enclosure from the front into the rack onto the shelf kit.
4. Fasten front and rear mounting ears to battery enclosure
5. Attach the mounting ears of the battery enclosure into the shelf kit and rack with screws at front and rear.

### ***Battery Module Installation***

1. Remove front cover from the battery enclosure.
2. Slide in battery modules.
3. Secure front cover in place.
4. Remove UPS connection cover from battery pack and connect the Anderson connector to UPS.