

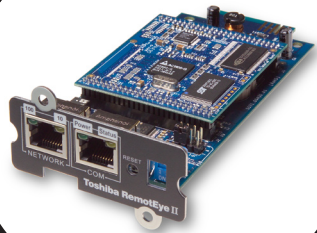
UNINTERRUPTIBLE POWER SYSTEMS



RemotEye® II

XT

Reliability in motion®



- Provides Management of UPS through Web Browser
- Provides Management of UPS through SNMPv1 and SNMPv3
- Supports Flash Upgrade through Network
- Provides Shutdown of Remote Client on LAN
- Provides Versatile Power Management Control
- Provides E-Mail Notification of UPS Status and UPS Events
- Provides Remote Control of UPS through Internet

TOSHIBA RemotEye II Web/SNMP Network Adapter

Versatile Power Management

RemotEye II is your complete Toshiba Uninterruptible Power Systems (UPS) management solution! RemotEye II is a tool designed to control and monitor Toshiba UPS remotely via Simple Network Management Protocol (SNMP) and Hypertext Transfer Protocol (HTTP/web browser) methods. In addition, when a power outage occurs, notification can be sent to the network administrators or maintenance personnel. Should a prolonged power outage occur, RemotEye II can initiate an orderly shutdown to connected servers to minimize any risk of data loss.

SNMP Ability

The RemotEye II provides an SNMP interface for Toshiba UPS. This allows easy integration of UPS management into an existing SNMP Network Management System. At any given time, SNMP queries can poll the RemotEye II agent for the current status of its connected Toshiba UPS. RemotEye II supports SNMPv1 and SNMPv3.

HTTP Familiarity

The RemotEye II provides an HTTP interface for Toshiba UPS. This allows easy access of Toshiba UPS information from any machine with a web browser. A network workstation or management station can open a RemotEye II website. Through the website, UPS information can be configured and monitored. RemotEye II also provides access to three java applets for monitoring, event login and trend analysis. The RemotEye II also supports secure socket layer (SSL) for web security.

Shutdown Capability

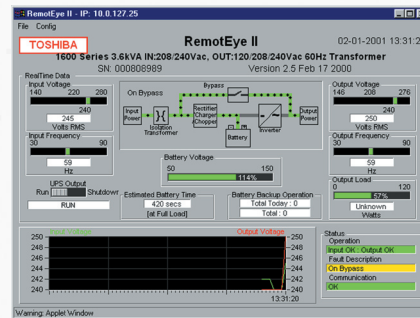
Application software is also included with the RemotEye II. This software allows RemotEye II to notify and shutdown important network servers. Through the existing network connections, RemotEye II can handle your unattended server shutdown needs.

E-mail Notification

The RemotEye II provides E-Mail notification of UPS status and UPS events to designated email recipients. Through the RemotEye II website, E-Mail notification can be sent out with events log or status report or both status and events logs attached. Daily status report provides the condition of the UPS for the last 24 hours, it can be configuration to send out at a specific time of the day.

Option - Environmental Monitoring Device (EMD)

Temperature and humidity sensors provide complete environmental monitoring. This EMD device also provides two sets of user defined dry contacts for monitoring. EMD part number: RMTI-EMD-HT.



The monitor applet offers real-time analysis of UPS operation.



RemotEye II's web interface allows a user to view the protected machines RemotEye II oversees.

| | RemotEye II / Internal Hardware | RemotEye II / External Hardware |
|-----------------------|--|--|
| Model Numbers | RMTI-INT-R4 | RMTI-EXT-R4 |
| Package Content | UPS power provided, 6ft configuration cable, user manual, MIB files, program files | 120 VAC adapter, 5ft cord, 6ft configuration cable, 6ft communication cable, user manual, MIB files, program files |
| Network Port | 10/100 Base T RJ-45 phone jack connector | |
| Serial Port | One asynchronous serial port | Two asynchronous serial ports |
| Network Protocol | SNMP over UDP/IP : HTTP over TCP/IP : ARP, RARP, TFTP and ICMP | |
| Network Security | SNMPv3, SSL, SSH | |
| Supported MIB | MIB II : Toshiba v1.2_MIB : JEMA MIB : RFC 1628 | |
| Operating Temperature | 0-40°C | |
| Operating Humidity | 10-80% | |
| Power Input | 8-12 VDC unregulated | 12 VDC unregulated |
| Power Consumption | 1.5 Watts maximum | 2.0 Watts maximum |
| Size | 130 mm (5.12") x 60 mm (2.36") (L x W) | 134 mm (5.28") x 86 mm (3.40") x 27 mm (1.10") (L x W x H) |
| Weight | 80 gm (0.2 lbs) | 170 gm (0.38 lbs) |
| Regulatory | RoHS FCC Class A : CE Class A | RoHS FCC Class A, UL, CUL, CE |
| Capability | Supports Toshiba 1000, 1600EP, 1700, 1800 | Support Toshiba 1000, 1400, 1500, 1600EP, 1700, 1800, 4200FA, G8000 |

UPS ADJUSTABLE SPEED DRIVES MOTORS CONTROLS INSTRUMENTATION PLC

TOSHIBA

TOSHIBA INTERNATIONAL CORPORATION

INDUSTRIAL DIVISION

13131 West Little York Road, Houston, Texas 77041

Tel (713)466-0277 Fax (713)892-5212

US (800)231-1412 Canada (800)872-2192 Mexico 01(800)527-1204

www.toshiba.com/ind

Copyright 2/2007

Available Through:

