



## Powerware 9170+ 12kVA

To Receive Detailed Quotation Call: 800-306-1125

<b>Condition</b>	<b>Pre-owned</b>
<b>Model</b>	9170+ 12 Slot
<b>Phase</b>	Single Phase
<b>KVA</b>	12
<b>Input Voltage</b>	208-240
<b>Output Voltage</b>	120/208 or 120/240
<b>Frequency (Hz)</b>	60
<b>Dimensions H x W x D</b>	<b>Inches</b> 60.7" x 24" x 28"
<b>Weight</b>	427 lbs
<b>Warranty</b>	90 Days
<b>Price</b>	<b>\$ 6,240.00</b>



Data Sheet: <http://www.unitedpb.com/documents/powerware/9170+.pdf>

### Hardware Description:

**Includes:**

- (1) 12 Slot 9170+ Enclosure - Beige
- (4) ASY-0673 9170+ 3kVA Power Modules
- (8) ASY-0529 9170+ Battery Modules - (3) Strings NEW Batteries
- (1) SNMP/Web Card add \$ 360.00
- (1) External Make Before Break Bypass add \$ 600.00

### Powerware 9170+ Runtime Charts

**Runtime Chart in minutes (full load / half load) Split-Phase Module ASY-0673**

Load (VA) Number of Strings (2 battery modules per string)

	1 String	2 String	3 String	4 String	5 String	6 String	7 String	8 String	9 String	10 String	11 String	12 String
3 kVA	6.5/16	16/40	27.5/67.5	40/98	53.5/132	67.5/167	83/204	98/242	15/283	132/324	149/365	167/408
6 kVA		6.5/16	11/27.5	16/40	21.5/53.5	27.5/68	33.5/83	40/98	46.5/115	53.5/132	60.5/149	57.5/167
9 kVA			6.5/16	9.5/23.5	13/31.5	16/40	20/49	23.5/58	27.5/67.5	31.5/78	35.5/88	40/98
12 kVA				6.5/16	9/21.5	11/27.5	13.5/33.5	216/40	19/46.5	21.5/53.5	24.5/60.5	27.5/68
15 kVA					6.5/16	8/20.5	10/25	12/30	14/35	16/40	18.5/45	20.5/50.5
18 kVA						6.5/16	8/20	9.5/23.5	11/27.5	18/44	14.5/35.5	16/40

**BUY**

**SELL**

**LEASE**

**RENT**

**TRADE**

# Powerware 9170+ Features

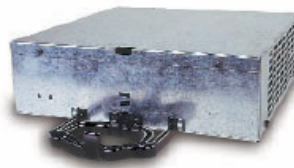


Powerware 9170+ 6-slot configuration

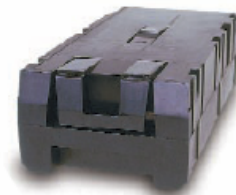
LCD Panel



Communication Cards



3 kVA Power or Charger Module (1 per slot)



Battery Module (2 per slot)

## Maximum Performance

- ▶ The lowest overall cost of ownership is a direct result of the low initial investment, higher operating efficiencies and programmable high efficiency
- ▶ A UPS solution that is as easy to install and operate as a PC. Universal components fit in any order in any slot without affecting the operation of the system or its protection of the critical load
- ▶ Featuring user-friendly LCD display and two internal communication slots, which accept a wide variety of connectivity devices and the new SNMP/Web adapter card
- ▶ Lightweight, high-performance power and battery modules weigh under 30 lbs. for easy service and hot swapping

## Maximum Reliability

- ▶ N+X power and logic redundancy eliminates single point-of-failure providing highest reliability and availability
- ▶ Redundant modularity virtually eliminates downtime and enhances serviceability
- ▶ ABM doubles battery service life

## Maximum Availability

- ▶ Double conversion online technology is universally recognized as providing the highest availability in an internet-centric global marketplace
- ▶ Provides protection against power surges, spikes, sags, line noise, and lightning

## Maximum Service Plans

- ▶ Powerware Gold Plan Plus Enhance and extend your standard UPS warranty with added assurance of knowing your UPS is installed and operated properly from the start
- ▶ Comprehensive coverage for the entire UPS
- ▶ On-site start-up by authorized Powerware Representative
- ▶ Replacement UPS or module delivered to your locations
- ▶ Original UPS or module picked up from your locations
- ▶ Please call for details

## Rack-mount Configurations

Adding yet another level of flexibility to the unique design of the Powerware 9170+ is the ability to transform a solution configured in a free-standing enclosure into a rack-mount solution by simply adding a rack-mount kit. Imagine all the standard benefits of the Powerware 9170+ in 3- and 6-slot configurations installed in a standard 19 inch computer rack.

